

## E-Comm Features

CCTV camera	✓
Door opening sensor	✓
Hidden lock with OTP	✓
Anti-fuel theft system	✓
Temporary partition	✓
Side door	✗
Load sensor with GPS tracking	✓
2nd camera inside container	✓
Cabin camera	✓
Touchpad	✓
Monitoring during ignition off	✓
Rear view camera	✓

<b>Dimensions</b>	
External	9 450 mm x 2 590 mm x 2 665 mm
Internal	9 320 mm x 2 525 mm x 2 440 mm
<b>Side Panel</b>	
Type	MS corrugated panel
Thickness	1.6 mm
<b>Floor</b>	
Type	MS chequered sheet
Thickness	3.15 mm
<b>Roof Panel</b>	
Type	MS embossed panels
Thickness	1.6 mm
<b>Tail Door</b>	
Type	270° opening doors with EPDM rubber
<b>Other Fitments</b>	
Lamp inside container • Regulatory parts • Temporary partition	

## TATA MOTORS

For more information, please visit our website: [www.tatatrucks.tatamotors.com](http://www.tatatrucks.tatamotors.com)  
 You can also contact our Sales Office: **Tata Motors Limited**, 4th Floor, Ahura Centre, 82, Mahakali Caves Road, MIDC, Andheri (East), Mumbai - 400 093 or call toll-free no. **1800 209 7979**.

\*Terms & Conditions apply. CAUTION: Accessories shown in the picture or elsewhere do not constitute standard fitment. The specifications are merely indicative. Due to continuous product improvements, these specifications are liable to change without notice.

## Tata Motors Ka Bharosa Rahe Aapke Saath Har Kadam



**TATA MOTORS**  
Connecting Aspirations



SIGNA 2818.T AMT  
Driver's delight.  
Owner's pride.



India's First Heavy Truck with Automated Manual Transmission



Say goodbye to driving fatigue and extra fuel expense. Get ready to embrace a delightful driving experience and higher profits. Because **India's First Heavy Truck with Automated Manual Transmission** is here! Designed to ease driving and improve fuel economy, **Signa 2818.T AMT** ensures that drivers focus more on road. As a result, they cover longer distances, safe and relaxed. For you, this trucking revolution is simply a sound investment!



## KEY FEATURES

▶ India's First Heavy Truck with Automated Manual Transmission



Automates clutch and shift actuation



Optimises gear shifting



Helps drivers to focus on road traffic conditions



Improves vehicle control



Enhances driving comfort and eases out handling



Improves vehicle safety and road safety

▶ Fully built offering [Reefer | Container] available on order

▶ Signa driving comfort & ergonomics with air-conditioning



## CUSTOMER BENEFITS

Improved FE performance for low-skilled drivers | **Reduced Total Cost of Ownership:** Higher fleet fuel economy, lesser wear of mechanical parts, lesser maintenance cost, enhanced clutch and transmission life | Enhanced driving comfort | Lower fleet operating cost



## APPLICATIONS



Reefers – Frozen Food Products & Dairy Products



Pharma Products



Parcel



White Goods



FMCG



E-commerce



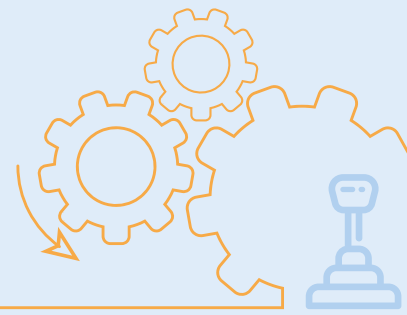
Auto Logistics



Fruits & Vegetables

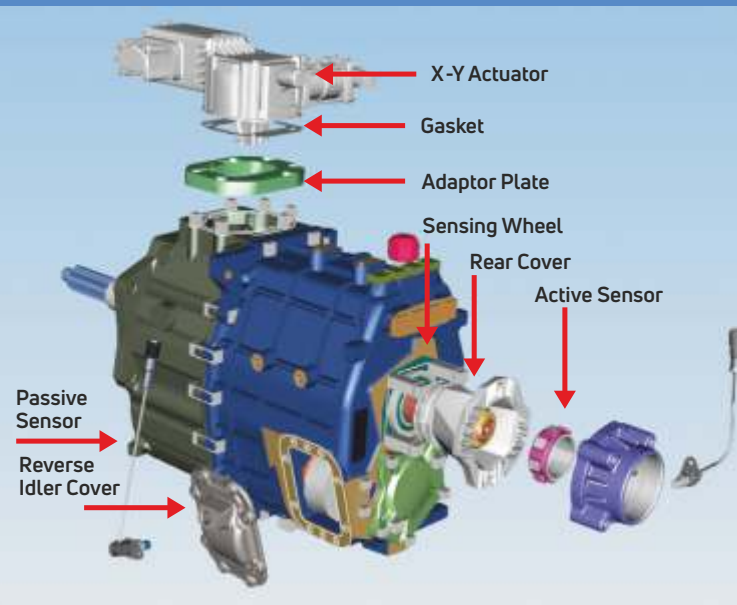






## HOW DOES AMT WORK?

- Enables fully autonomous gear shifting and clutching with software algorithm providing real-time gear shift strategy
- Selects gear based on incoming information
- Pneumatic clutch actuator opens clutch, gearbox actuator executes gear shift and then pneumatic clutch actuator closes clutch
- AMT automates and optimizes clutch and gear actuation i.e. changing gears only in optimum speed range and reduces clutch errors taking available engine torque, vehicle load and road inclination into account like an experienced driver



## FUNCTIONS OF AUTOMATED MANUAL TRANSMISSION

- Ergonomic Automated Manual Transmission shift level unit
- Triple switch pad to navigate among Crawl | Economy/Power | Manual/Automated modes
- TFT Display unit on dashboard for visual control



## SHIFT LEVER UNIT



Neutral Button:  
Used to shift in neutral gear

Crawler: Supports vehicle launching  
in extreme conditions

Other functions from SLU:  
HSA • Kick down

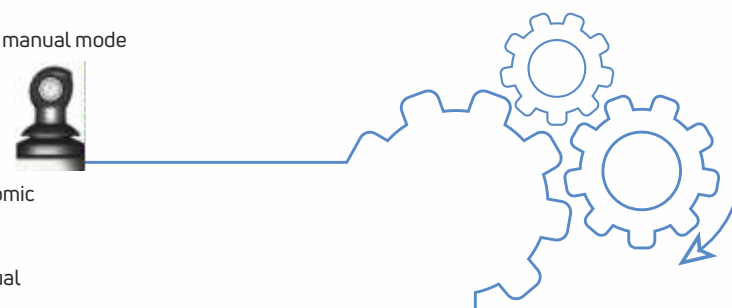


Shift Lever:  
Used for up & down shifting in manual mode

Function Button:  
Activates functions of AMT

E/P: Switch between economic  
and power drive mode

M/A: Switch between manual  
and automated drive mode



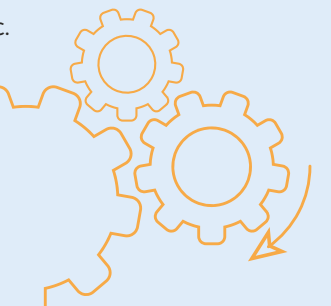
## AMT DISPLAY UNIT



Display Unit: Will indicate gear number,  
mode (economy/power), errors, etc.

Buttons to adjust contrast, brightness, etc.

## SHIFT LEVER UNIT



## VALUE TO CUSTOMER

### COMFORT & CONVENIENCE

- AMT eliminates gear shift fatigue and enables lower TAT
- AMT improves vehicle control and enhances riding comfort and drivability
- AMT eases out vehicle handling and improves vehicle and road safety



### FLEET OPERATIONS

- AMT evens out need for skilled drivers
- AMT enables low skilled drivers achieve equivalent fuel economy as high skilled drivers
- AMT improves fleet running cost and levels out fleet inefficiencies



### TCO

- AMT gives 3-4 % fuel savings over MT at fleet level
- AMT helps in reducing wear of mechanical components
- AMT enhances clutch and transmission lifetime (1.5 times)
- AMT helps in reducing wear of mechanical components
- AMT reduces downtime and lowers cost incurrence towards driveline maintenance
- AMT improves vehicle reliability on road



# HILL START AID (HSA) ▶▶▶▶



- Prevents roll-back of vehicle during 'Stop & Go' situation on an uphill gradient
- Easily actuated with the help of a switch on dashboard, in conjunction with braking
- Works in integration with Anti-Lock Braking System (ABS)



## VALUE TO CUSTOMER

- Improves driver safety and driving comfort
- Avoids roll-back on steep slopes and possibility of rear end collision
- Minimises clutch wear & brake liner wear
- Improves uptime and vehicle operating continuity

## TECHNICAL SPECIFICATIONS

ENGINE		
Model	Cummins ISB 5.9 BS4 180T1	<ul style="list-style-type: none"> <li>• Flat torque curve in segment for class-leading fuel economy on all applications and terrains</li> <li>• High max. torque for excellent driveability   Lesser no. of gear shifts, for fatigueless driving under all road load conditions</li> <li>• Superior wheel traction &amp; gradeability</li> <li>• Increased life of fuel injector and fuel filter</li> </ul>
Type	CI Water-cooled Direct Injection Turbo-charged Inter-cooled Common Rail Diesel Engine	
No. of Cylinders	6 Inline	
Bore/Stroke	102 mm x 120 mm	
Capacity	5 883 cc	
Max. Engine Output	132.5 kW @ 2 500 r/min	
Max. Torque	700 Nm @ 1 300 - 1 800 r/min	
Fuel Filter	Two-stage Fuel Filtration Pre & Main Fuel Filter with Water Separator	
FEATURES		
	Electronic Viscous Fan Waste Gate Turbocharger	<ul style="list-style-type: none"> <li>• Need-based power consumption for engine cooling resulting in higher fuel economy</li> <li>• Higher power density   Reduced fuel consumption</li> </ul>
CLUTCH		
Type	Single Plate Dry Friction Type Booster-assisted; 380 mm Dia Organic	<ul style="list-style-type: none"> <li>• Organic clutch for smooth &amp; efficient engine torque transfer</li> <li>• Longer life   Zero wear adjustment   Zero maintenance</li> </ul>
GEAR BOX		
Model	G750 AMT   6 Forward + 1 Reverse	<ul style="list-style-type: none"> <li>• Automated Manual Transmission (Synchromesh on all forward gears and constant mesh on reverse gear)</li> <li>• 6-speed proven and reliable high capacity transmission to suit multitude of applications and operating terrain optimising wheel torque, gradeability &amp; fuel efficiency</li> </ul>
Gear Ratio	FGR: 9.17   TGR: 1.00	
Gear Shift	Manually Remote Shift	
REAR AXLE		
Model	RA109RR	<ul style="list-style-type: none"> <li>• Evenly optimised RAR to balance desired traction for high GVW and fuel economy requirement</li> <li>• 21 000 kg designed capacity with wider track for supporting high tonnage node</li> <li>• Reinforced rear axle design for high durability and load bearing ability</li> </ul>
Description	Single Reduction Hypoid Gears, Extra Heavy Duty, Fully Floating Axle Shafts	
Ratio	5.58 RAR	
FRONT AXLE		
Type	7T Capacity Reverse Elliott type Front Axle	<ul style="list-style-type: none"> <li>• Proven FA with robust 7T capacity forging delivering best-in-class durability</li> <li>• Excellent tyre life</li> </ul>
FRAME		
Type	Ladder-type Heavy Duty Frame with Riveted/Bolted Cross Members	<ul style="list-style-type: none"> <li>• High capacity robust frame assembly with 285 mm depth, strength, durability and low maintenance</li> </ul>
SUSPENSION		
Front	Parabolic Springs at Front with Anti-roll Bar Assy	<ul style="list-style-type: none"> <li>• Superior riding comfort with better shock insulation, stress prevention &amp; road stability</li> <li>• Proven single tyre 7T capacity lift axle for superior tyre life and improved self-steerability</li> </ul>
Rear	Semi-elliptical Multi-leaf Spring at Rear	
PERFORMANCE		
Wheelbase & ROH	WB: 6 750 mm   ROH: 3 180 mm	<ul style="list-style-type: none"> <li>• Clinically designed axle spacing and deck length for better load distribution and application suitable deck length</li> <li>• High gradeability to suit loaded applications across terrains</li> </ul>
Gradeability	23 % at rated GVW	



TYRES		
Size & Type	Option 1: 295/80R 22.5 Tubeless (F+R) Option 2: 295/80R 22.5 Tubeless (F) + 10R20 (R)	<ul style="list-style-type: none"> <li>• Choice of tyres for full GVW passing; radial tubeless &amp; tube options:</li> <li>• Superior tyre mileage &amp; fuel economy</li> <li>• Higher tread life &amp; traction   Easier tyre maintenance</li> <li>• Greater productivity &amp; riding comfort</li> </ul>
FEATURES		
Telematics	In-built Tata Fleetman	• Vehicle monitoring & trip management for vehicle owners
Air-conditioning	Standard Factory Fitment	• Higher driving comfort   Higher driver productivity
STEERING		
Type & Ratio	Tilt & Telescopic Steering with Integral Hydraulic Power Assist	• Superior driving comfort & compatibility to multiple driver sizes & driving habits   Fatigueless driving   Faster & easier trips
WEIGHTS & DIMENSIONS		
Gross Vehicle Weight	28 000 kg	• Increased GVW, certified by ARAI
Payload	19 000 kg	• Increased payload, certified by ARAI
Deck Length/Body Size	9 510 mm (31.2 ft)	• High loading span to suit multiple long wheelbase applications
Body Options	Container Reefer	• Best-in-class durability & performance • Full vehicle warranty • Single invoice funding • Best-in-industry after sales service
WARRANTY		
Driveline	6Y / 6L km Standard	• Warranty offer unmatched in industry
Vehicle	3Y / 3L km Standard	

## KEY FEATURES



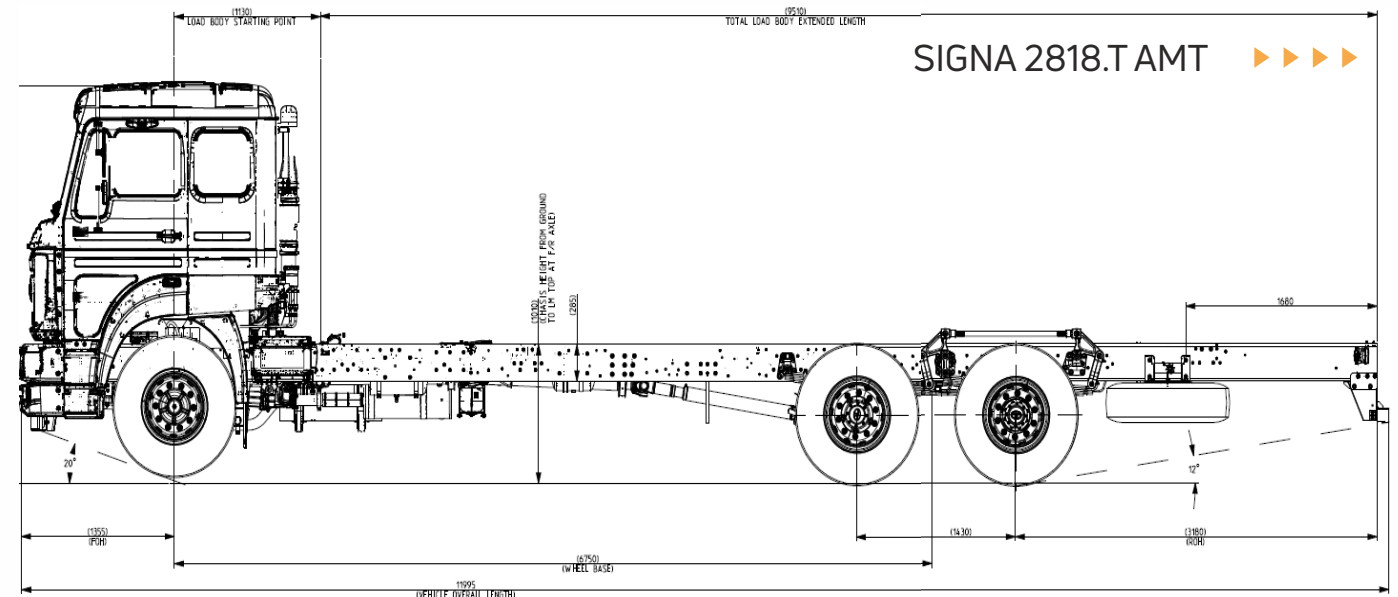
### ELECTRONIC VISCOUS FAN

Need-based power consumption for engine cooling, resulting in higher fuel economy



### WASTE GATE TURBOCHARGER

- Higher power density
- Reduced fuel consumption



## SIGNA CABIN FEATURES



Easy accessibility of controls, comfy & expedient driveability



Premium interior aesthetics for superior in-cab driving experience



Seats with Emergency Locking Retractor (ELR) seat belts



Tilt & Telescopic Steering for superior driving comfort



Air-conditioning



## TRIP MILEAGE INDICATOR



ADMINISTRATION  
OF FUEL EXPENSES

1. Accurate fuel economy monitoring per trip
2. Better planning and control of fuel expense per trip
3. Direct digital validation for fuel economy data



TRIP ANALYSIS  
& OPECO MANAGEMENT

1. Route - Load - Age - Driver optimisation for best fuel economy in conjunction with Tata Fleetman
2. Predictive and flexible OPECO inflection based on trip matrix





**TATA**  
**FleetMan**  
Fleet Telematics for higher productivity

- ▶ Better Fleet Utilisation
- ▶ Higher Vehicle Uptime
- ▶ Better Control of Operating Cost
- ▶ Faster Turnaround Time
- ▶ Proactive Maintenance
- ▶ Higher Driver Productivity
- ▶ Better Return Load Planning
- ▶ Stolen Vehicle Tracking



Real-time Vehicle Tracking



Monitoring of:  
Idling | Green Band Driving  
Over Speeding | Over Revving  
Over Run | Heavy Throttle



Review of Trip Performance between Locations



Geo-fencing



Fuel Consumption & DEF Monitoring



Harsh Acceleration, Braking and Cornering Detection



SMS Alerts & Reports

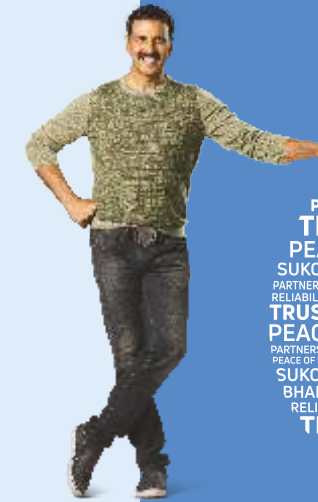


Mobile Application



**Tata 6-Year Warranty**

Sampoorna khayal har kadam.



6 SAAL. AAPKA KHAYAL.

*Terms & Conditions apply*